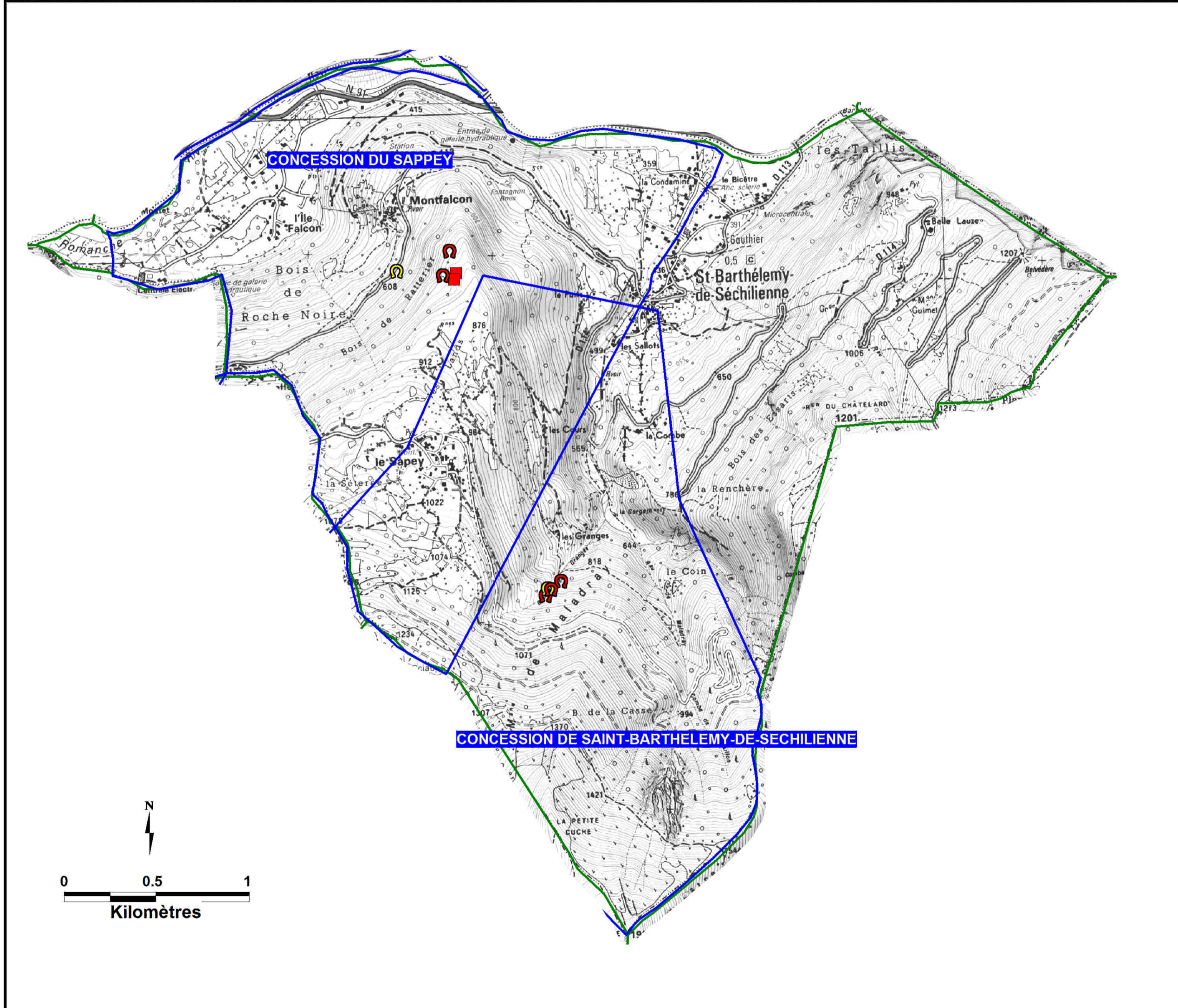


Filon du Sappey




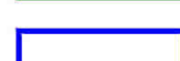
Secteur minier de Séchilienne (Isère)

Evaluation et cartographie des aléas mouvements de terrain

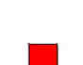




COMMUNE DE SAINT-BARTHELEMY-DE-SECHILIENNE

CARTE INFORMATIVE
1/2 500



Limites administratives

-  Limites communales
-  Limites des concessions










Ouvrages débouchant au jour

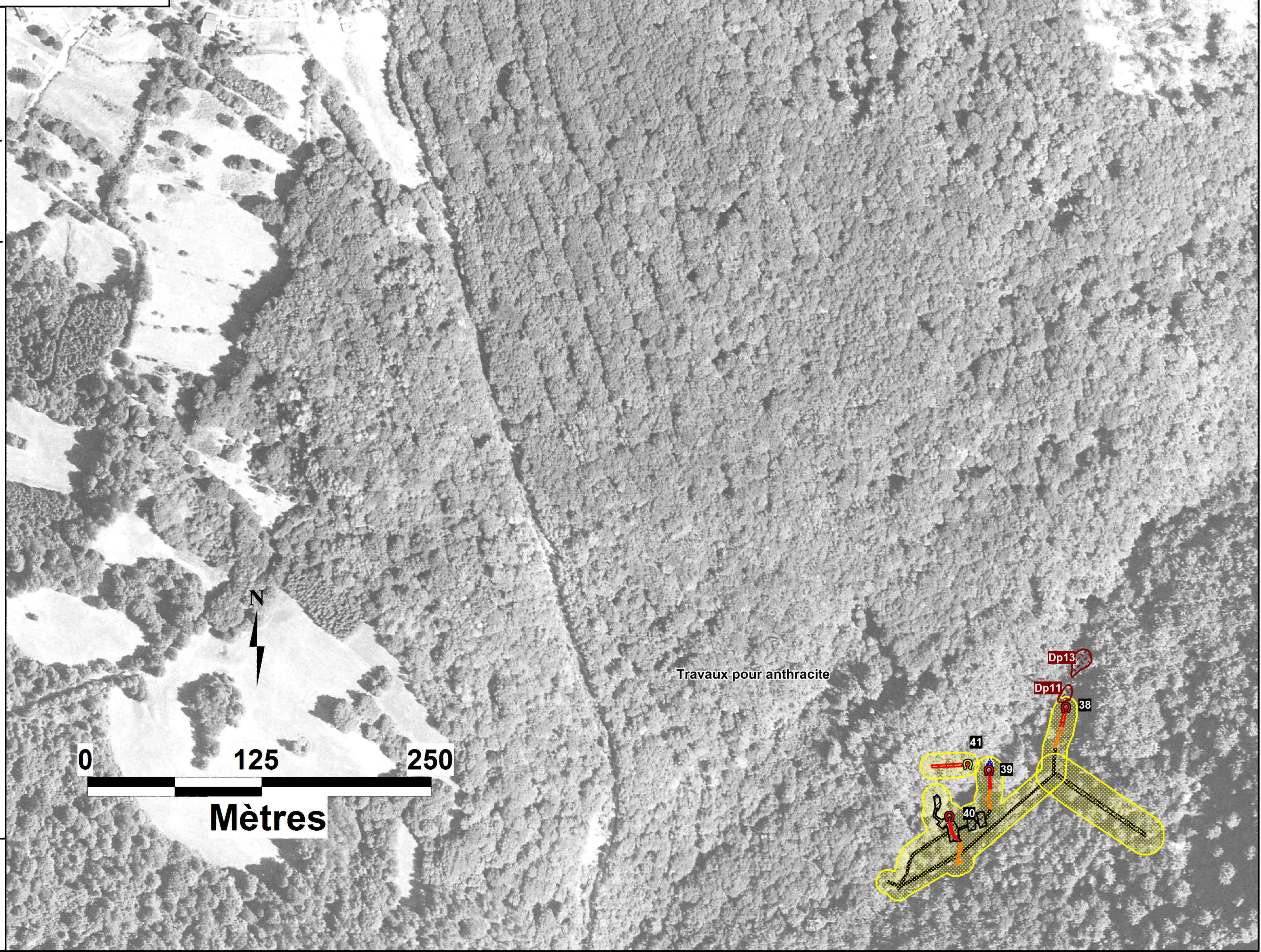
-  Puits matérialisé
-  Puits localisé
-  Entrée de galerie matérialisée
-  Entrée de galerie localisée
-  Emergence/écoulement

Désordres

-  Désordre ponctuel
-  Zone de désordre

Travaux miniers souterrains

-  Emprise des travaux souterrains avérés avec marge d'incertitude
-  Galeries à moins de 10 m de profondeur
-  Galeries entre 10 et 20 m de profondeur
-  Emprise des travaux souterrains avérés sans marge d'incertitude
-  Zone potentiellement affectée par des travaux miniers
-  Dépôt minier de surface
-  Indice de travaux matérialisé (grattage)
-  Indice de travaux localisé (grattage)
-  Exploitation à ciel ouvert, tranchée



Travaux pour anthracite